



Littleton Neighborhood Canal Improvements

Project Overview

The High Line Canal (Canal), originally built in 1883 as a means of delivering irrigation water from the foothills to the plains, has evolved into a treasured ecological and recreational resource that winds through the Denver Metro Area. With the completion of *The Plan for the High Line Canal* in 2019 (The Plan), the High Line Canal Conservancy (Conservancy) is working with the City of Littleton, South Suburban Park and Recreation District (SSPRD) and Arapahoe County Open Spaces (ACOS) to implement enhancements recommended in The Plan to improve access, provide amenities and enhance the Canal’s ecological health.

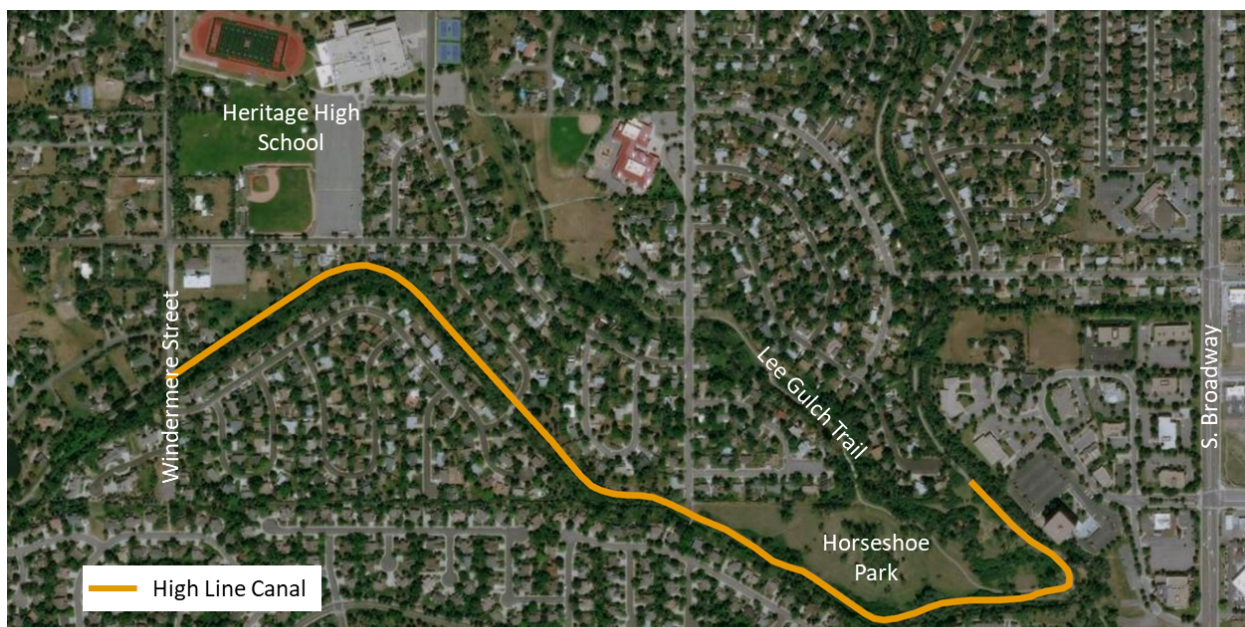


The segment of the Canal between Windermere Street and Lee Gulch, part of the Heritage neighborhood in Littleton, sees significant use and has several critical projects recommended in The Plan. This 1-mile reach of the Canal was recently transformed for stormwater management by the City of Littleton and in 2021/2022 the Conservancy, SSPRD, the City of Littleton and ACOS will implement trail improvements in this area through a community-informed design process.

Improvement Projects: The Conservancy will partner closely with SSPRD in 2021 to complete the design process and gather community input for the following improvements:

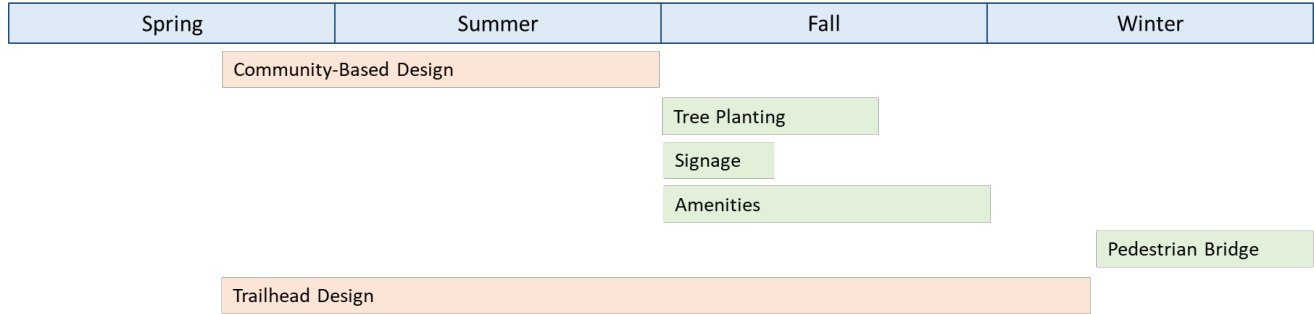
- **Landscape Enhancement** – 50 new trees will be planted along this 1-mile section of trail
- **Amenities** – amenities like a pause places, nature play area or dispersed natural elements could be added as desired by local residents
- **Interpretive Signage** – Signage at the Lee Gulch Flume to educate about the Canal’s unique history
- **Pedestrian Bridge** – The pedestrian bridge at Elati Street will be replaced in 2022
- **Trailhead** – A new trailhead off Dry Creek Court will be designed in 2021 for implementation in 2022

Project Area





Project Timeline



Partners: To execute these improvements, the Conservancy has partnered with SSPRD, the City of Littleton and ACOS and will deeply engage local community members who live and use the Canal in this area.

Funding: These trail improvements are funded through a public-private partnership. The Conservancy has raised funds for this project from an anonymous foundation. Governmental funds are projections and funds have not been committed for all portions of the project. Funding projections are reflected below.

Project Funding Projections

	HLCC	SSPRD	ACOS	TOTAL
Design and Engineering	\$175,000			\$175,000
Landscape Enhancement	\$50,000			\$50,000
Amenities/Activation/Signage	\$144,000			\$144,000
Pedestrian Bridge		\$100,000	\$168,000	\$268,000
Trailhead Construction	\$273,000	\$315,000	\$387,000	\$975,000



Historic Lee Gulch Flume