



**South Suburban**  
PARKS AND RECREATION



**ARAPAHOE COUNTY**  
OPEN SPACES

Protect. Connect. Enjoy.



**Littleton**



City of Centennial

## **Background :**

- **In 2012, the High Line Canal Preservation and Enhancement Study (Holweger) inventoried and identified various improvements that could be made along the High Line Canal from W. County Line Road to E. Hampden Ave.**
- **In 2013, the High Line Canal Working Group utilized the study to prioritize projects by agency.**
- **In 2014, South Suburban Parks and Recreation, the City of Littleton, and the City of Centennial reviewed the prioritized projects from 2013 and identified other priorities important to each agency. Most of the projects align with the 2013 prioritized list developed by the working group.**



## Proposed Projects :

### Pedestrian Bridge Replacements

- #1 Southbridge Swim and Tennis
- #2 South Bannock Street
- #3 South Suburban Ice Arena
- #4 deKoevend Park Entry

### New Pedestrian Bridge

- #5 South Franklin Street

### Trail Connection

- #6 S. Elati Street

### Restroom

- #7 Milliken Park

## Jurisdiction:

Littleton

Littleton \*

Centennial

Centennial

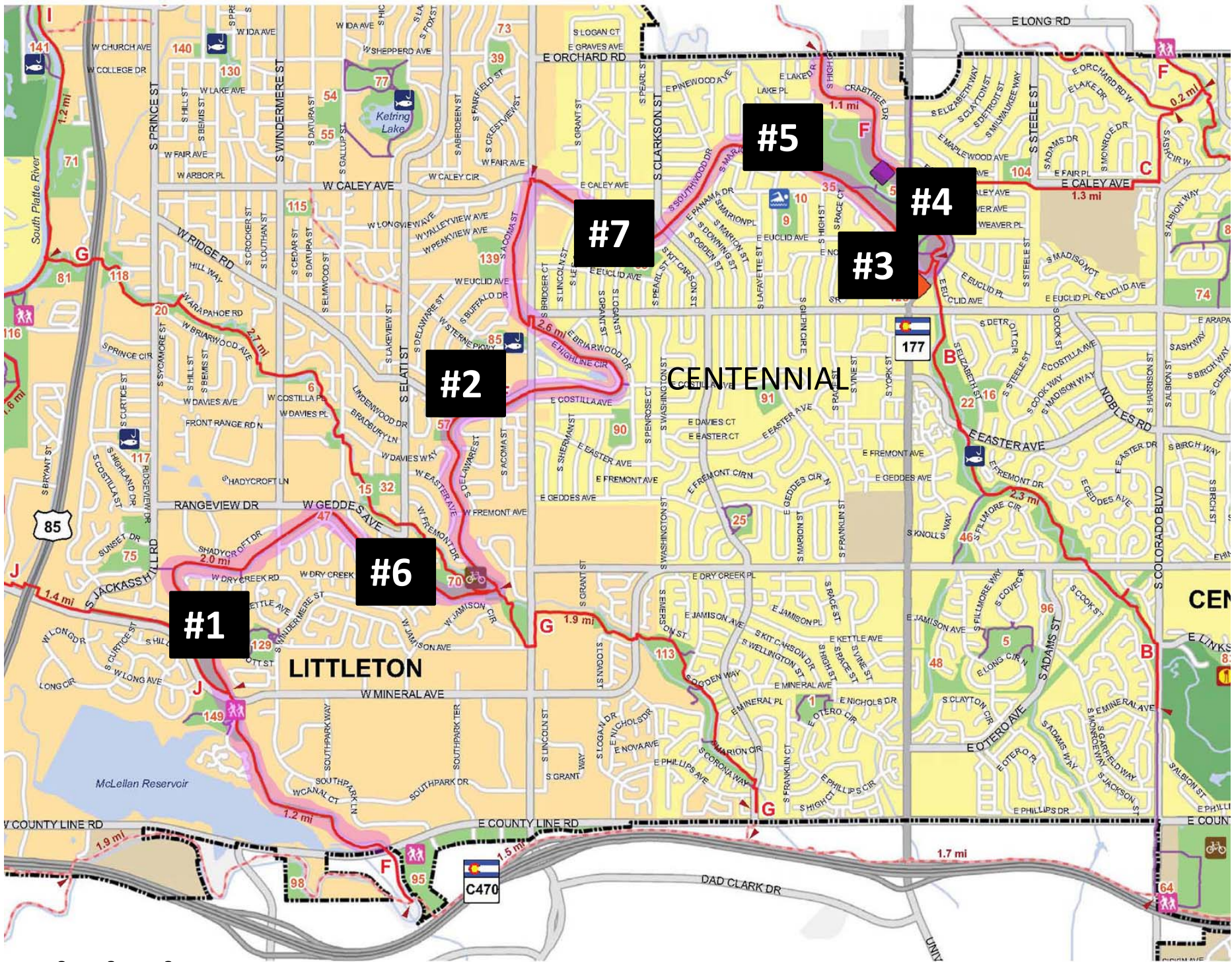
Centennial \*

Centennial \*

Littleton \*

\* Prioritized in 2013 by the working group





# Vicinity Map

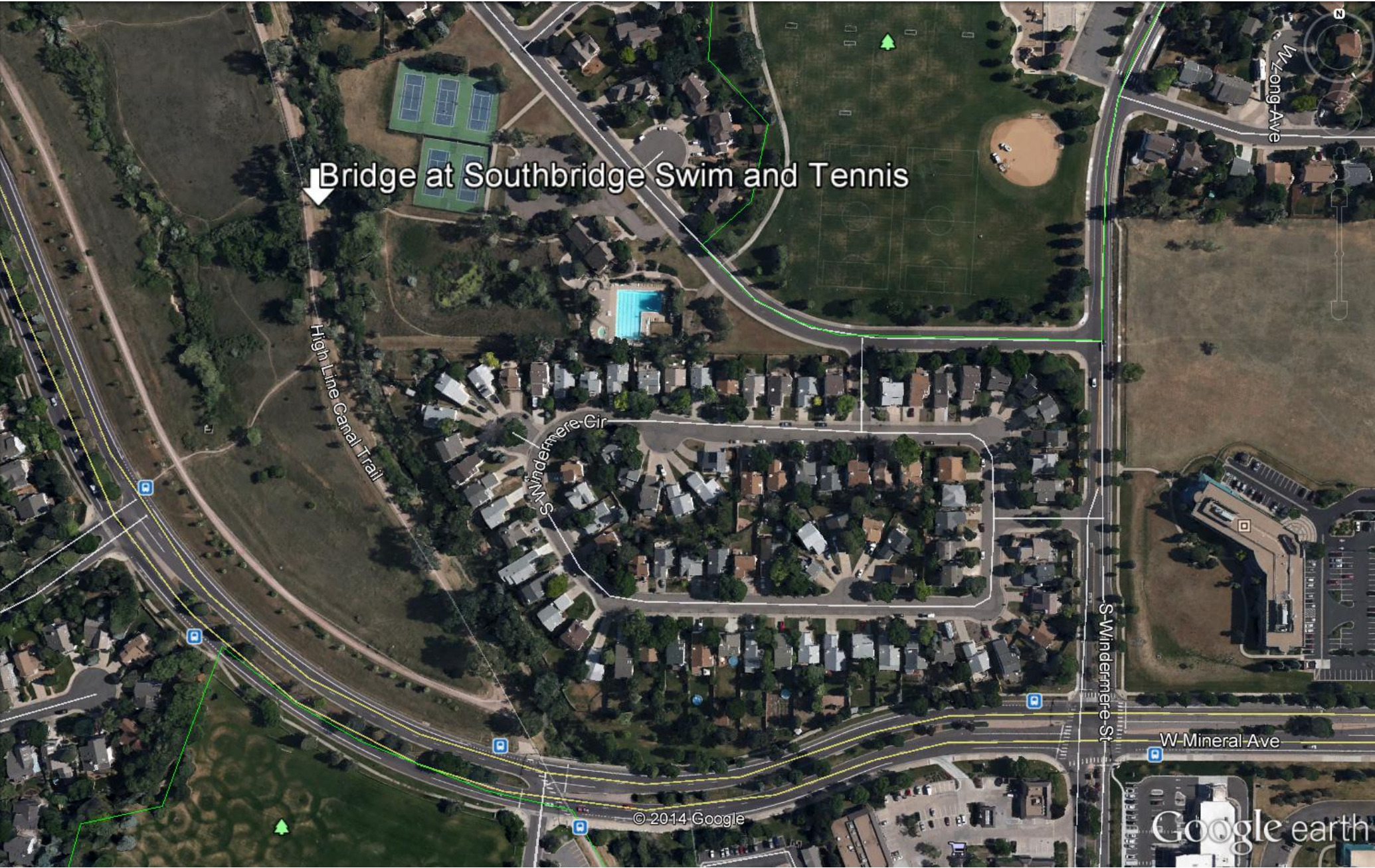


NORTH



# Pedestrian Bridge Replacements





Detailed Vicinity Map







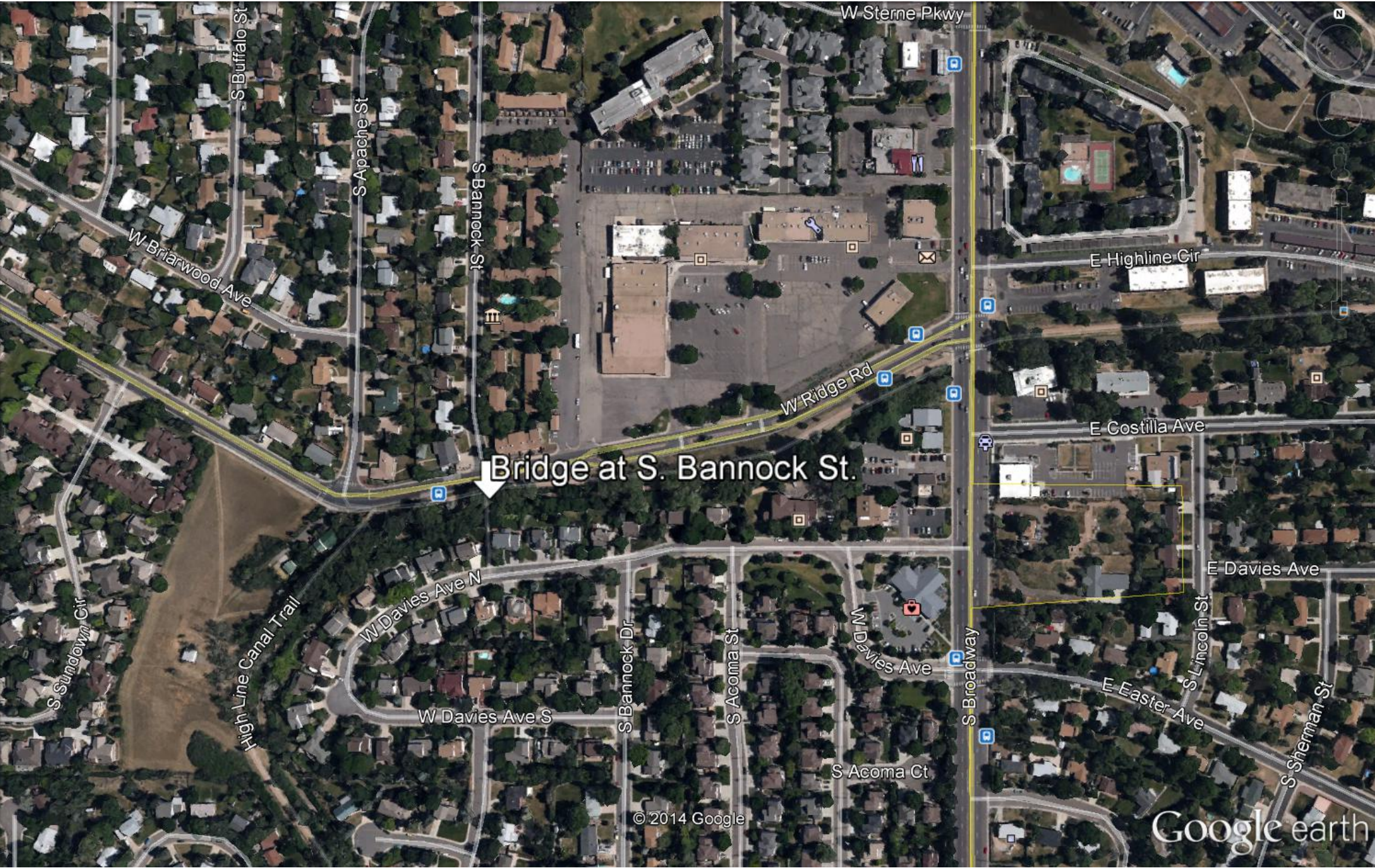
**Proposed Project:**

- Remove and replace 32' x 4'-6" bridge
- Update abutments, railings and deck to meet current codes
- Update approach slab materials and slope

Estimated Cost:\$150,000

Bridge at Southbridge Swim and Tennis





Detailed Vicinity Map







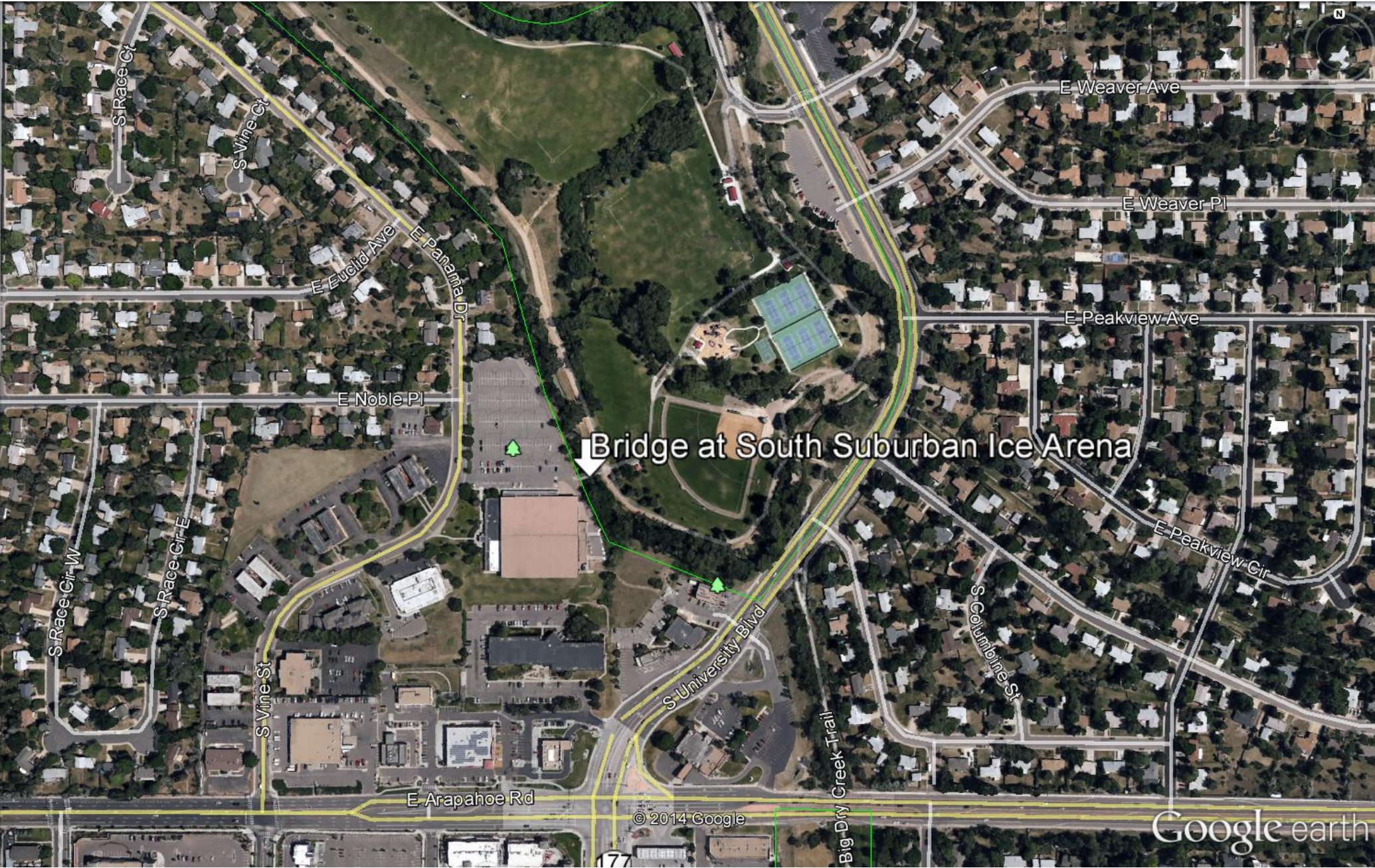
Bridge at S. Bannock St.

**Proposed Project:**

- Remove and replace 40'x 7' bridge
- Update abutments, railings and decks to meet current codes
- Update approach slab materials and slope

Estimated Cost:\$150,000





Detailed Vicinity Map







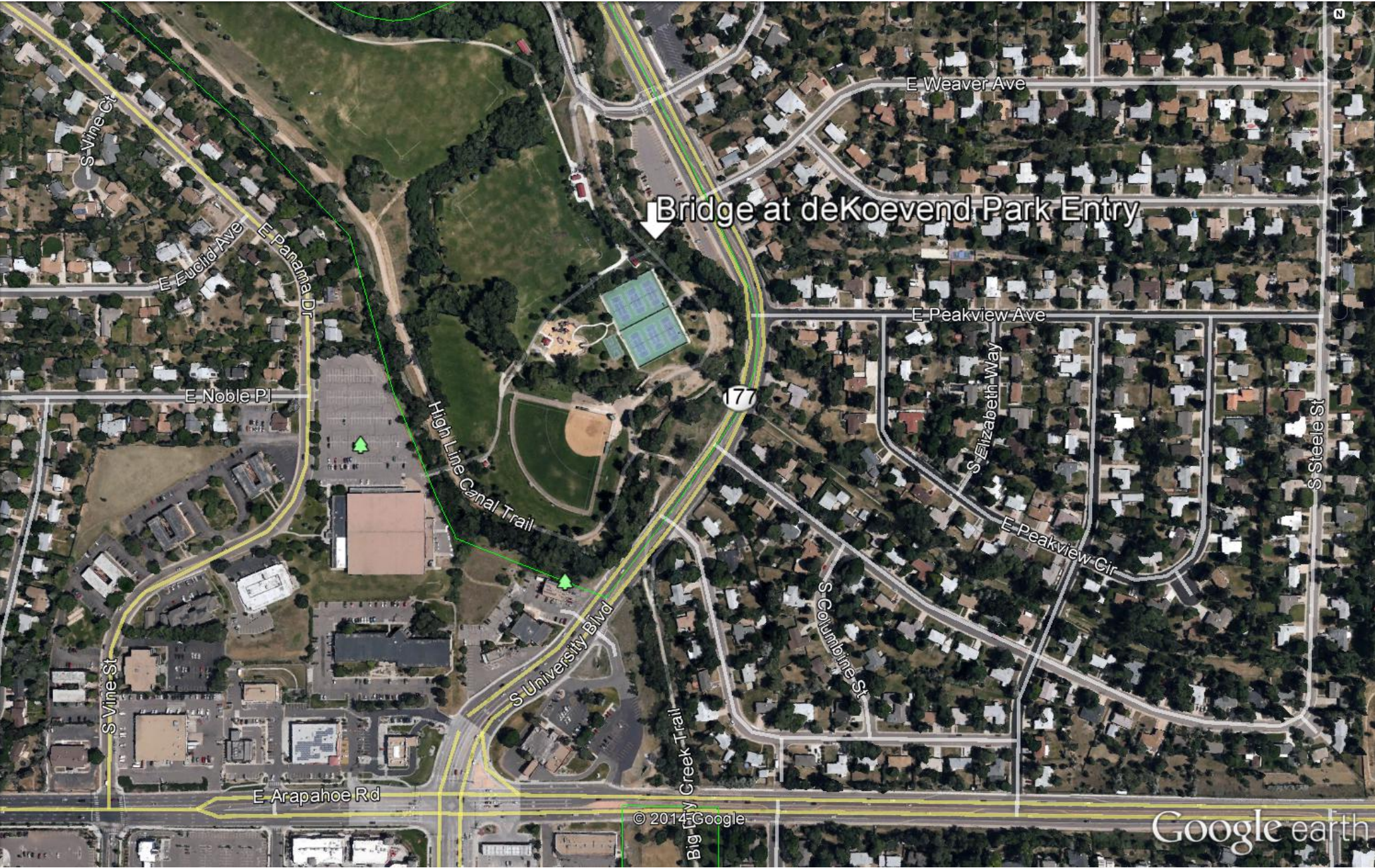
Bridge at South Suburban Ice Arena

**Proposed Project:**

- Remove and replace 76' x 5'-4" bridge
- Update abutments and railings to meet current codes
- Update approach slab materials

Estimated Cost:\$200,000





Detailed Vicinity Map







Bridge at deKoevend Park Entry.

**Proposed Project:**

- Remove and replace 32' x 4' bridge
- Update abutments and railings to meet current codes
- Update approach slab materials

Estimated Cost:\$170,000





Crumbling Infrastructure

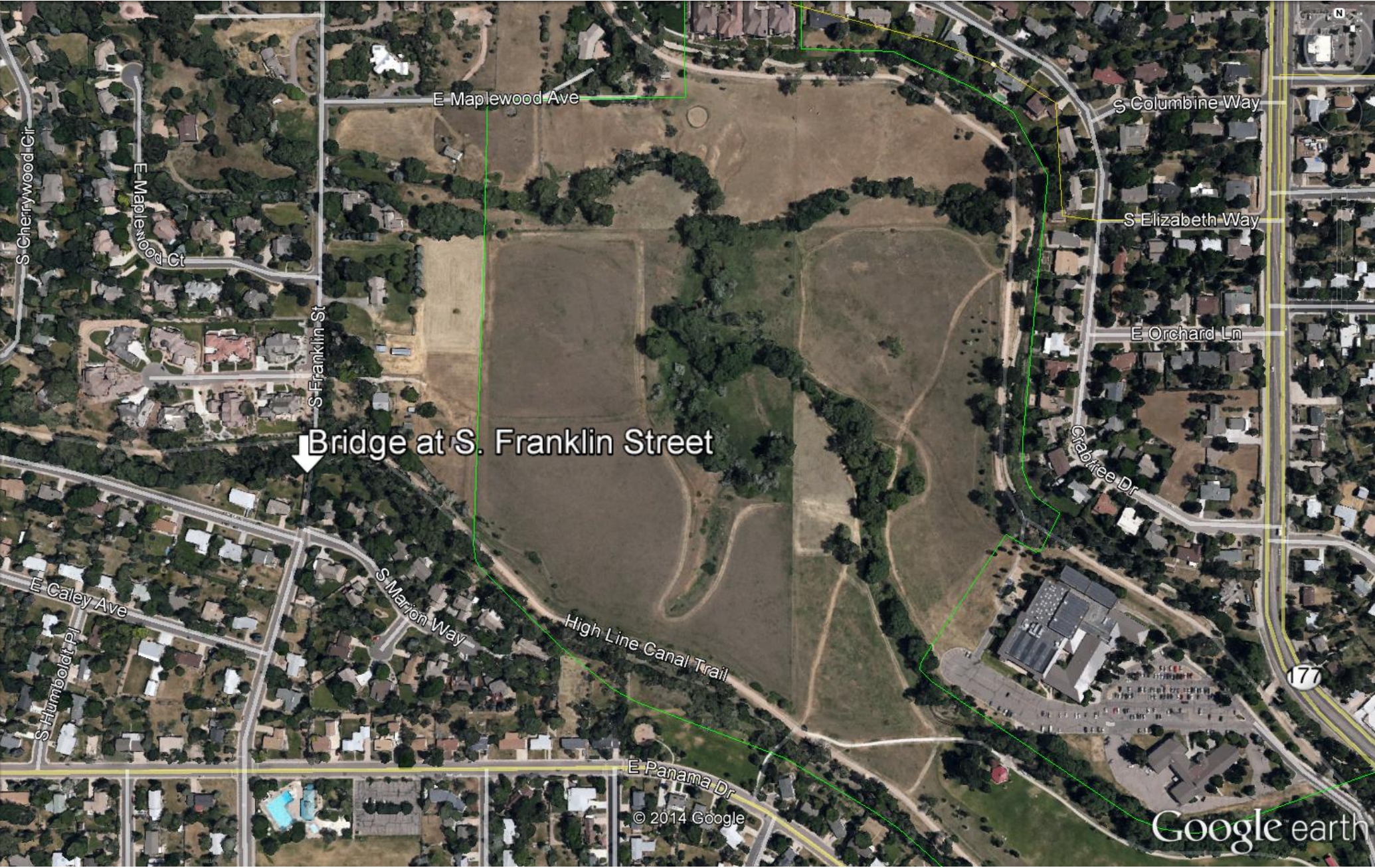






# New Pedestrian Bridge





Detailed Vicinity Map







New Bridge at S. Franklin St.

### Proposed Project:

- Install new 60' x 8' bridge and approaches to provide access to the High Line Canal Trail, Broadway Estates, Ben Franklin Pool and Ben Franklin Elementary School.
- Provide vehicle rated bridge for maintenance access

Estimated Cost:\$200,000







## Example of bridge design standard

- Pre-fabricated
- Self-weathering Corten steel railings
- Concrete decks
- Concrete approaches
- 8' Width







# Trail Connection









Trail Connection at S. Elati St.



**Proposed Project:**

- Install a concrete ramp from S. Elati St. to the High Line Canal Trail to improve access

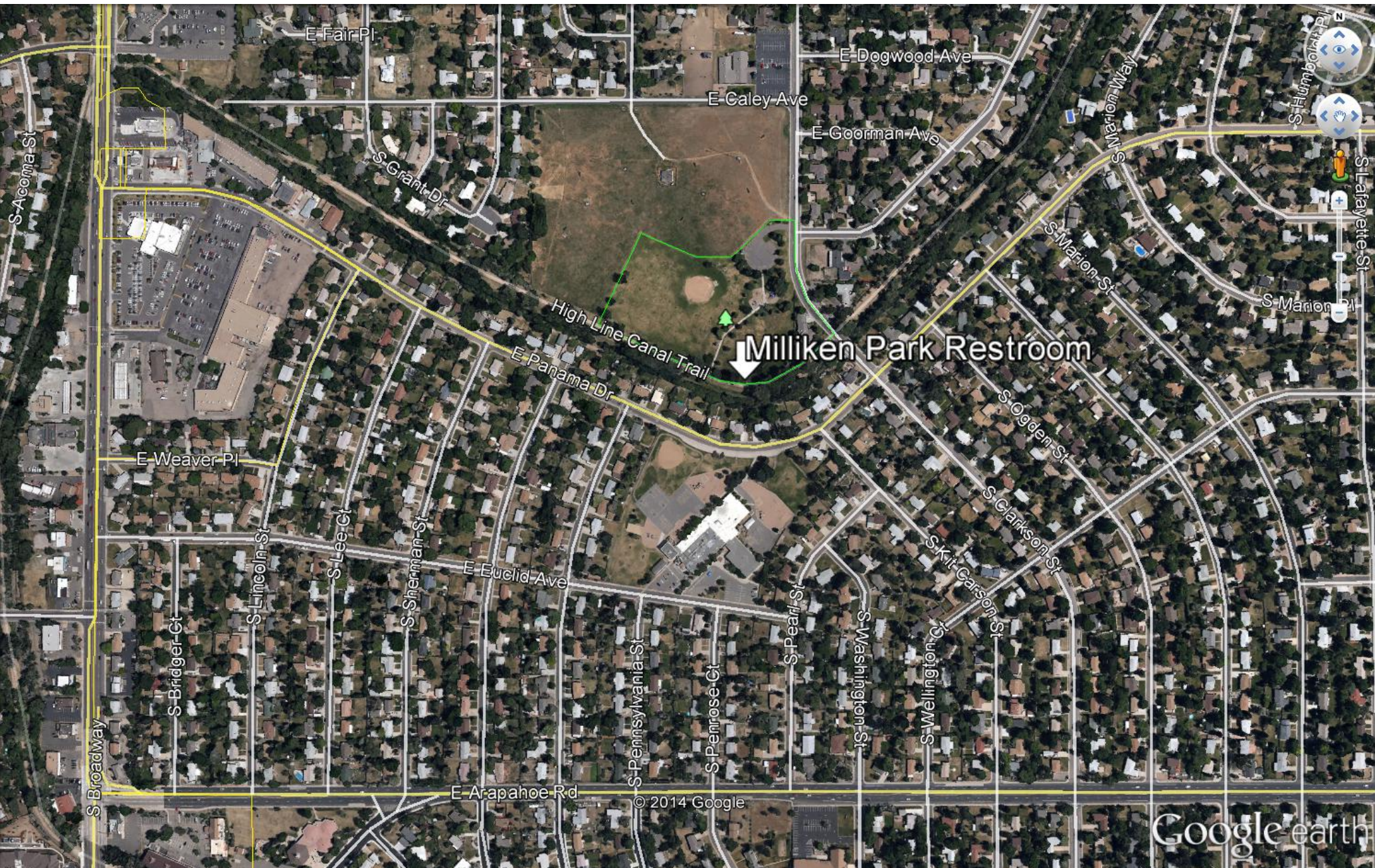
Estimated Cost:\$50,000





Restroom





Detailed Vicinity Map







Milliken Park Restroom Proposed Location



### **Proposed Project:**

- Install flush restroom facility for trail and park users
- Year-round heated facility
- Nearest restroom downstream is approx. 1.7 miles at deKoevend Park
- Nearest restroom upstream is approx. 5.3 miles at Writer's Vista Park

Estimated Cost: \$300,000





Arapaho Park

## Examples of flush restroom facilities design standard

- Prefabricated building
- Pre-plumbed
- Pre-wired



deKoevend Park





## Proposed Funding Breakdown:

Project	Explanation	SSPR Amount	City of Littleton	City of Centennial	ACOS Grant	Total
High Line Canal Bridge at deKoevend Park Entry	Replace bridge at deKoevend parking lot	\$50,000		\$50,000	\$100,000	\$200,000
High Line Canal Bridge at Franklin Street	New bridge at Franklin Street	\$50,000		\$50,000	\$100,000	\$200,000
High Line Canal Bridge at SSIA	Replace bridge at SSIA parking lot	\$50,000		\$50,000	\$100,000	\$200,000
Miliken Park Restroom	Install flush restroom at Milliken Park	\$75,000		\$75,000	\$150,000	\$300,000
	<b>Total Centennial</b>	<b>\$225,000</b>	<b>\$0</b>	<b>\$225,000</b>	<b>\$450,000</b>	<b>\$900,000</b>
High Line Canal Bridge at Bannock Street	Remove and replace bridge near Bannock Street	\$37,500	\$37,500		\$75,000	\$150,000
High Line Canal Bridge at Southbridge Swim and Tennis	Remove and replace bridge near Southbridge Swim and tennis	\$37,500	\$37,500		\$75,000	\$150,000
High Line Canal Elati Street Connection	Improve connection from Elati St. to the High Line Canal		\$25,000		\$25,000	\$50,000
	<b>Total Littleton</b>	<b>\$75,000</b>	<b>\$100,000</b>	<b>\$0</b>	<b>\$175,000</b>	<b>\$350,000</b>
	<b>Grand Total</b>	<b>\$300,000</b>	<b>\$100,000</b>	<b>\$225,000</b>	<b>\$625,000</b>	<b>\$1,250,000</b>





**South Suburban**  
PARKS AND RECREATION



**ARAPAHOE COUNTY**  
OPEN SPACES

Protect. Connect. Enjoy.



**Littleton**



**City of Centennial**

# Questions?

